



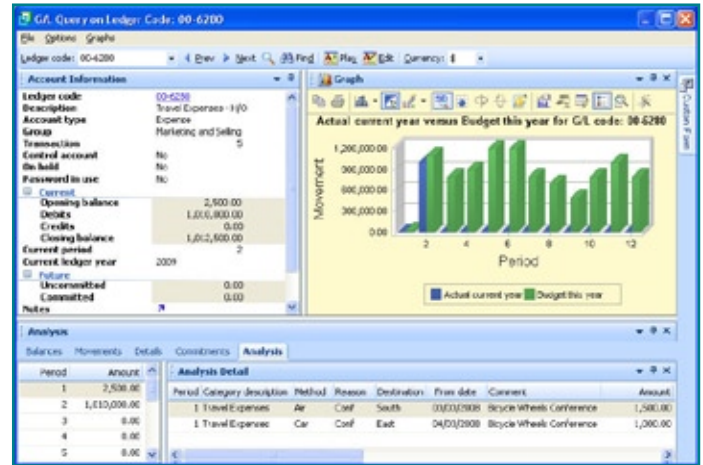
General Ledger Cost Analysis

Objective

Provides detailed analysis of the values distributed to accounts without the need to create additional, unnecessary accounts in General Ledger.

The Value of General Ledger Cost Analysis

- Streamline your chart of accounts by reducing the number of individual ledger accounts for specific expenses
- Ideal for expense accounts such as travelling, repairs and maintenance, general expenses or donations
- Create analysis categories to facilitate required analysis while reporting the totals in the financial statements
- Eliminates the need to manually analyze such general ledger accounts after the fact
- Detailed distribution to analysis categories is enforced throughout the system
- Quick and easy analysis of expenses in Queries and Reports



Matching General Ledger Cost Analysis to your Business

- Create your own analysis categories
- Define up to five analysis types per category with unlimited sub-categories per analysis type
- Easily track expense details within one G/L account
- Eliminate unnecessary accounts in your General Ledger
- View analysis details in the G/L Query
- Analyze expenses using Graphs with supporting details in SYSPRO Reporting Services reports
- Post to analysis categories where the expense trans-action is recorded

GL Analysis Summary

