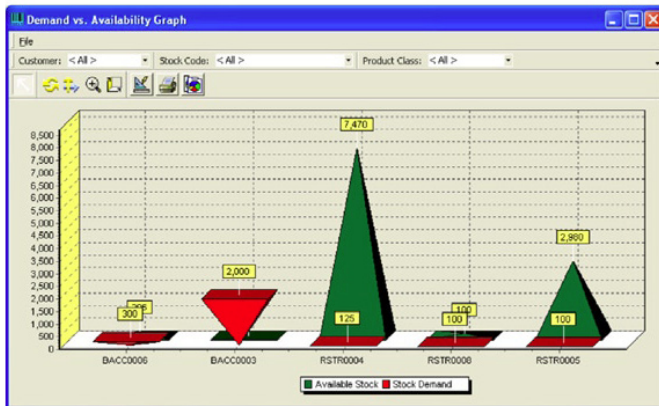




Advanced Warehouse Management

Effective warehouse management is knowing exactly where in the warehouse any given item or quantity of items is located. For many, the costs associated with moving goods into storage, to the shop floor and back to dispatch stores, are significant. The speed, accuracy and efficiency with which this task is performed can impact directly upon the bottom line.

SYSPRO AWM ensures that material is located correctly, delivered to the shop floor just-in-time, stored and then accurately picked for dispatch to the customer. However SYSPRO AWM is not solely concerned with stock location and movement. Powerful rules can be embedded to aid organisations that deliver to their customers on a just-in-time basis and/or have sequencing rules imposed upon the content of any given dispatch. For example in the automotive sector when stillages are delivered to track side several times daily. With real time control over raw materials usage and the associated costs the need for annual stock checks are eliminated.



Stock availability verses demand. Based on the order requirements graph shows the stock position against the sales orders required.

SYSPRO AWM uses advanced workflow technology to model the warehouse environment and recommend actions based on a number of factors, including the capacity and zone of bin locations, the accessibility, volume and weight constraints of forklifts, and the physical warehouse environments and activity. For example AWM can be set up to perform very simple 'chaos binning' or sophisticated priority based zone binning with all levels in between.

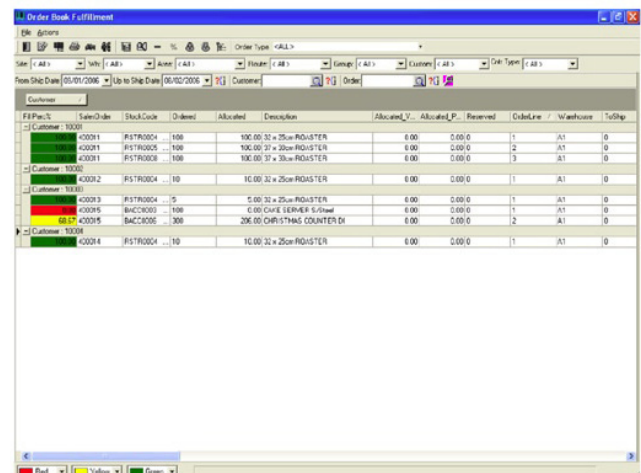
Data Capture

There are a number of options for processing transactions within AWM. As well as via desktop computers with or without touch screens, data can also be entered and queried using Radio Frequency

(RF) devices such as hand held or forklift truck mounted devices with bar code readers. Using RF data is updated instantly and is validated online ensuring the correct stock and containers are selected from the instructions. Some examples of the transactions that can be recorded are:

- Put away from the receiving bay to main storage
- Bin movements within main storage
- Manual stock adjustments
- Confirmation details within the stock take system
- Bulk movement from storage to replenish pick face
- Bulk movements as part as a sales order pick from storage to marshalling or dispatch
- Bulk movements to Work in progress line side

Bar coding allows the accurate labelling of stock items and records inventory transactions utilising bar coding validation at source, thereby removing the need for duplication of data capture. Bar codes can be captured using desktop, touch screen, radio frequency and batch scanners for all transaction types. By capturing transactions at source, accuracy of stock information is ensured. Operators can pick against a pick list, in conjunction with bar code scanning, removing the problems typically associated with dispatch errors.



Item No.	Sales Order	Stock Code	Ordered	Allocated	Description	Allocated_V	Allocated_P	Reserved	Order Line	Warehouse	Totals
Customer 1000											
0001	IFSTR004	100	100.00	100.00	100.00 32 x 25cm ROASTER	6.00	0.00	0.00	1	AI1	0
0001	IFSTR005	100	100.00	100.00	100.00 32 x 25cm ROASTER	6.00	0.00	0.00	2	AI1	0
0001	IFSTR003	100	100.00	100.00	100.00 32 x 25cm ROASTER	6.00	0.00	0.00	3	AI1	0
Customer 1000											
0002	IFSTR004	110	10.00	10.00	10.00 32 x 25cm ROASTER	6.00	0.00	0.00	1	AI1	0
Customer 1000											
0003	IFSTR004	15	5.00	5.00	5.00 32 x 25cm ROASTER	6.00	0.00	0.00	1	AI1	0
0005	BACCC003	100	6.00	6.00	6.00 CASE SUPER R/SHAW	6.00	0.00	0.00	1	AI1	0
0005	BACCC006	100	200.00	200.00	200.00 CARTRIDGES COUNTER DI	6.00	0.00	0.00	12	AI1	0
Customer 1000											
0004	IFSTR004	110	10.00	10.00	10.00 32 x 25cm ROASTER	6.00	0.00	0.00	1	AI1	0

Order book fulfillment for flexible allocation of stock to orders.



Advanced Warehouse Management cont...

Work in Progress

KANBAN pull rules can be applied to ensure stock is always available for production at the line side work cells. Movements are automatically invoked to replenish stocks to WIP from storage, as raw materials are being consumed during the production cycle.

Pallet Control

Pallet Control provides the ability to manage stock at container, pallet or stillage level. It simplifies the capturing of transactional details and provides higher traceability. It also provides the ability to scan the unique container bar code which describes both the stock code and the quantity and any relevant lot and serial information.

Two Stage Put Away

AWM caters for those companies who require two stage put away. For example where "shunter" forklift trucks are used to move pallets to and from main storage, where the goods are then placed in racking by high reach forklift trucks.

In this scenario the receipt of stock to end of aisle is classified as one movement, and from the end of the aisle to the main storage bin is classified as a second movement.

Quality

The Advanced Quality Module (which is a separate module) allows your quality department to apply its testing regime at key transactional stages. Workflow based, the system listens to the SYSPRO activity, determines whether a quality test should be applied to the respective activity and automatically creates a quality test that can be serviced from a work-to list.

Enquiries and Reports

AWM comes with a wide range of standard reports and enquiries. In addition, using SYSPRO Reporting Services (a separate module which includes Crystal Report Writer) or SQL stored procedures, customised reports and enquiries can be created.

Some examples of the standard reports within AWM are:

- Stock Usage Report
- Stock Shortage Report
- Change Level Report
- Bin Bar Code Report
- Rack Bar Code Report
- Rack Listing Report
- Warehouse Listing Report
- Bin Listing Report
- Bin / Stock Relationship Report
- Warehouse / Stock Relationship Report
- Movements Report
- Movement Agent Report
- Movement Agent Status Report
- Stock Take Report
- Pallet Bar Code Report
- User Defined Reports