

System Manager



To serve as the foundation for the SYSPRO system and seamlessly integrate all applications for easy flow, a user friendly interface, and efficient data processing, and to define the environment and access parameters.

The Value of SYSPRO System Manager

- Configuration Options: use only those features required
- Stationary formats and tables: design individual stationary forms and create standard reference tables to reduce repetitive keystrokes and data entry error
- Security: sensitive data and critical data processing functions are protected by SYSPRO's multilevel security system
- User Interface: SYSPRO's powerful user interface allows the easy and efficient processing of data
- Printer Manager: controls the destination and form of printed reports by selecting Windows printing or by defining your own print library
- G/L Integration: defines how each module integrates to the General Ledger, in detail or summary

User Interface

- Personalised interface provides state-of-the-art features for customisation and ease of use
- Retains settings per operator thereby supporting roaming
- Defines a 'favorite' menu per operator that can be launched from anywhere in the system
- Defines task lists with single or multiple programs
- Tasks may be recurring with auto reminder
- Automatically insert tasks into Microsoft Outlook
- Use standard explorer type menu or publish each menu as an HTML page
- On line browse and search facility quickly accesses key information such as ledger codes, customer accounts, etc.
- User defined menus per operator, group or company
- 'Triggers' (Windows API) allow launching of custom programs after certain functions, enabling customisation without source changes
- Multimedia objects may be added to static information
- Context sensitive help with ability to bookmark, annotate, search and print
- Translatable report heading and text
- Third party or SYSPRO programs can be run from user defined menus

K3 Factsheet

System Manager

System Requirements

- The System Manager module is mandatory with the use of the SYSPRO system

Configuration Options

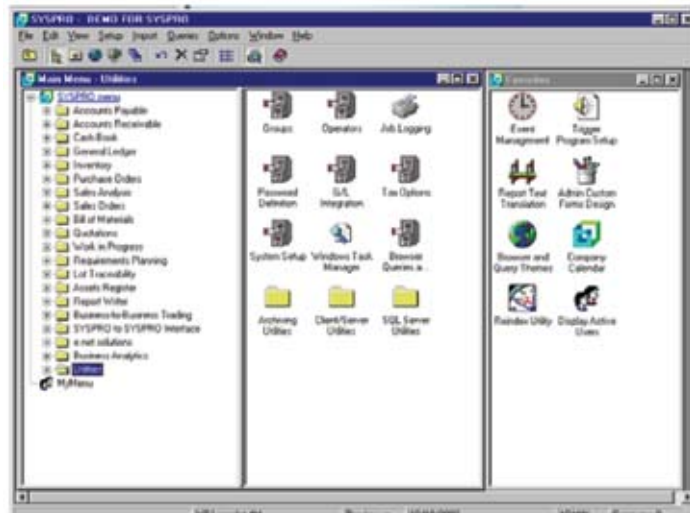
- Define how each module operates
- Update the options as requirements change
- When the software is enhanced, choose new features to utilise
- Changing management policies can be quickly and easily tested and implemented

Stationary Formats and Tables

- Design stationary using Word templates or bitmaps, or map to pre printed forms
- Selected fields can be printed as bar codes
- Standard tables can easily be modified to reflect changes in customer and supplier terms, tax rates, etc.
- Buying and selling exchange rates are easily updated via tables

Security

- Track user activity via the job logging system
- Password protect sensitive functions
- Security is defined per group
- Access levels are controlled per module program and/or per certain transactions and sensitive fields



About K3 Business Technology Group

K3 are the world's largest supplier of SYSPRO ERP systems - one of the most widely installed Enterprise Resource Planning applications. Coupling robust, advanced functionality with first-class service and support, K3's scalable, integrated Enterprise Resource Planning (ERP) solutions are designed to address manufacturing, supply-chain, distribution, financial, customer management, human resources and e-commerce needs.

Our customers benefit from local supply and support backed by SYSPRO's global organisation and it is our reputation for excellence in customer service that has led many of the UK and Europe's leading manufacturing and distribution companies to choose K3 solutions.