



SYSPRO Factory Scheduling

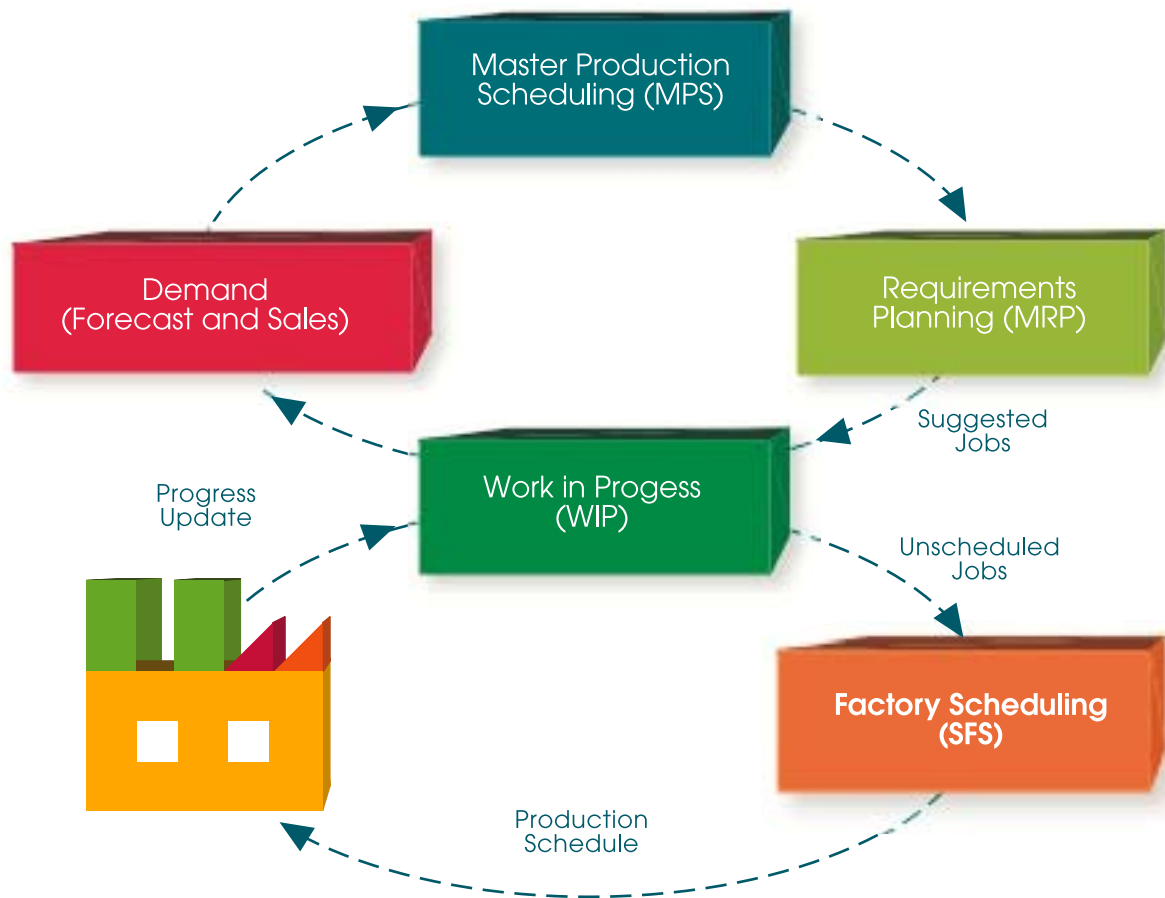




The SYSPRO Factory Scheduling products give you the ability to schedule the production in your factory to a detailed level, considering the capacity constraints in your environment. You have the option of three products, ranging from the less sophisticated Graphical Planning Board to the very sophisticated Advanced Scheduler, the latter being classified as an APS (advanced planning and scheduling) system.

These solutions enable you to have true control of the production resources you have at your disposal, considering your customer requirements, the current situation on the floor, the complex constraints you face, shift patterns etc.

These products are the result of collaboration between SYSPRO and Preactor International, a leading provider of, and specialist in, scheduling solutions. The solutions provide the depth of features and experience of the Preactor products, structured to work elegantly and simply with the core SYSPRO manufacturing modules. In this way SYSPRO provides you with a complete solution to manage your factory effectively.



The Graphical Planning Board

The Graphical Planning Board is a basic finite capacity scheduler with basic rules and features for automatic scheduling.

- Forward/Backward and bi-directional sequencing
- Order loading by due date, priority or "first come, first served"
- Load orders based on product or operation attributes (e.g. color, customer etc)
- Orders to be completed late are highlighted
- Drag-and-drop editing of operations
- Highlight operation flow of orders
- Finite or infinite capacity resources
- Color coding on Gantt chart by product class and order status
- User-definable calendars, resources states and efficiencies, breakdown, planned maintenance
- Automatic machine selection within work center
- Allow only manual sequencing on selected machines
- Easy identification and highlighting of order and operations
- Resource utilization display
- Ability to save multiple schedules and compare using the comparative views.

Finite Scheduler

The SYSPRO Finite Scheduler product contains more sophisticated features to schedule your factory. You are able to model your factory more accurately using features such as transfer batches, sequence dependent setup times, preferred resource selections, maximum operation spans, maximum delay between operations, etc.

- Multiple constraints can be considered per operation
- Furnace type resources using match properties for infinite capacity resources
- Maximum operation make span
- Jobs on hold
- Sequence dependent changeover times
- Transfer quantities between operations (transfer batches)
- Automatic schedule repair
- Subsequent operation machine selection based on current operation machine selected
- Relative efficiencies between machines in a work center
- Preferred resource selection
- Slack time between operations
- Mid-batch updates and progress indicator
- Schedule analysis reports.



Advanced Scheduler

The SYSPRO Advanced Scheduler product allows you to generate schedules of a high quality in complex environments through the use of advanced scheduling rules and by considering the availability of components and raw materials. You can define your own complex scheduling rules using filters, a combination of standard and/or defined advanced rules, user defined scripts etc. Jobs on different BOM levels and stock on hand is pegged based on definable rules, thereby ensuring a feasible schedule.

- Automatic allocation (pegging) of orders on different BOM levels and to materials or components. User definable pegging rules can be used
- Linking of parent and sub jobs (locked pegging)
- Schedule despite shortages option
- Parallel loading scheduling algorithms
- Preferred sequence rules based on user definable attributes
- Advanced algorithmic rules e.g. Minimize WIP, Selective Bottleneck (TOC) etc.
- Building of custom scheduling rules.

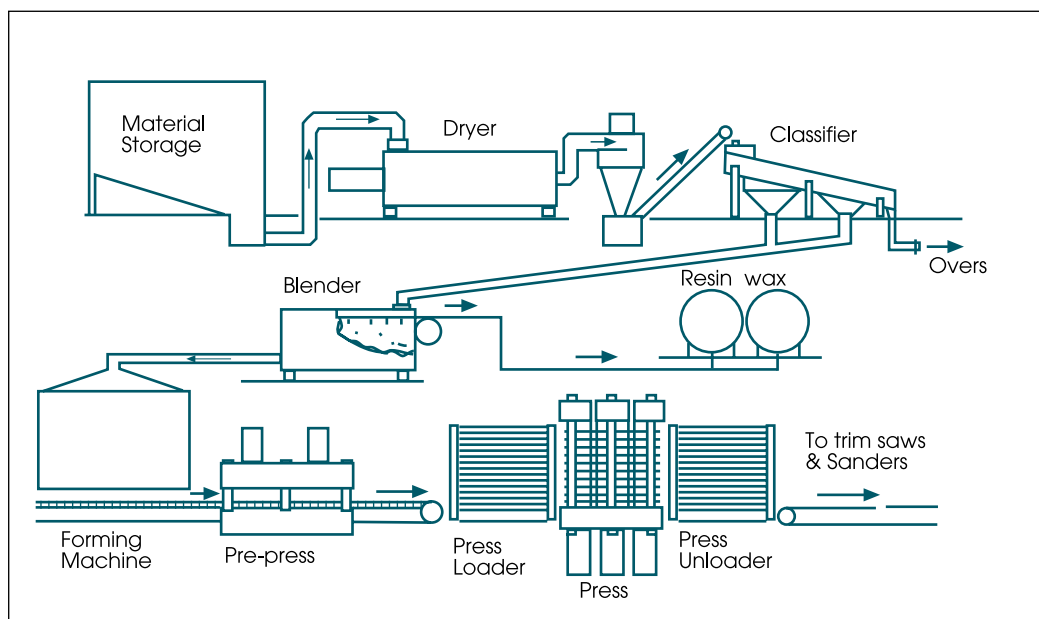
Control your production process

Without control of your production process it is impossible to predict what will come out of your factory. It is therefore impossible to give customers accurate and reliable due dates or provide them with updated information on the expected progress of their jobs. Without control of production you can also not ensure planned efficient utilization of resources.

Model your unique production environment

No two factories are exactly alike. The ability to model your specific factory accurately is therefore critical. Using the standard building blocks of the SYSPRO Bill of Material module and further modeling capabilities in the Factory Scheduling module you can model the constraints in your factory to the level of detail required in your environment. The setup of your factory model can easily be adjusted as your factory evolves to always accurately reflect the reality. The product routings only have to be maintained in one place (SYSPRO Bill of Material), reducing double work and inconsistencies.

- Use standard Bill of Material setup
- Flexible mapping of definable attributes (e.g. color, thickness, etc)
- Use modeling structures such as transfer batch quantities, maximum operation spans, oven-type resources, secondary product and machine constraints
- Customizable scheduling rules
- Factory Scheduling supports the production initiatives in your factory like Lean Manufacturing or Theory of Constraints (TOC) by using predefined or customized advanced scheduling rules.



Anticipate factory performance

Everybody measures factory performance after the fact. Not everybody has the ability to accurately predict factory performance before the fact. Factory Scheduling gives you the ability to anticipate the utilization and service levels of your factory down to a machine level. Using this you can take action to ensure the desired effectiveness of your factory before it is too late.

- Hot spots grid provides the anticipated utilization levels by machine per week
- The visual Gantt chart representation of the schedule gives you the ability to identify obvious potential problem areas at a glance
- The performance metrics gives you the measurements to judge the quality of your current schedule
- The "Highlight late operations" feature allows you to instantly identify orders that will be late according to the schedule. You can then take action to resolve this problem, understanding the knock-on effects.

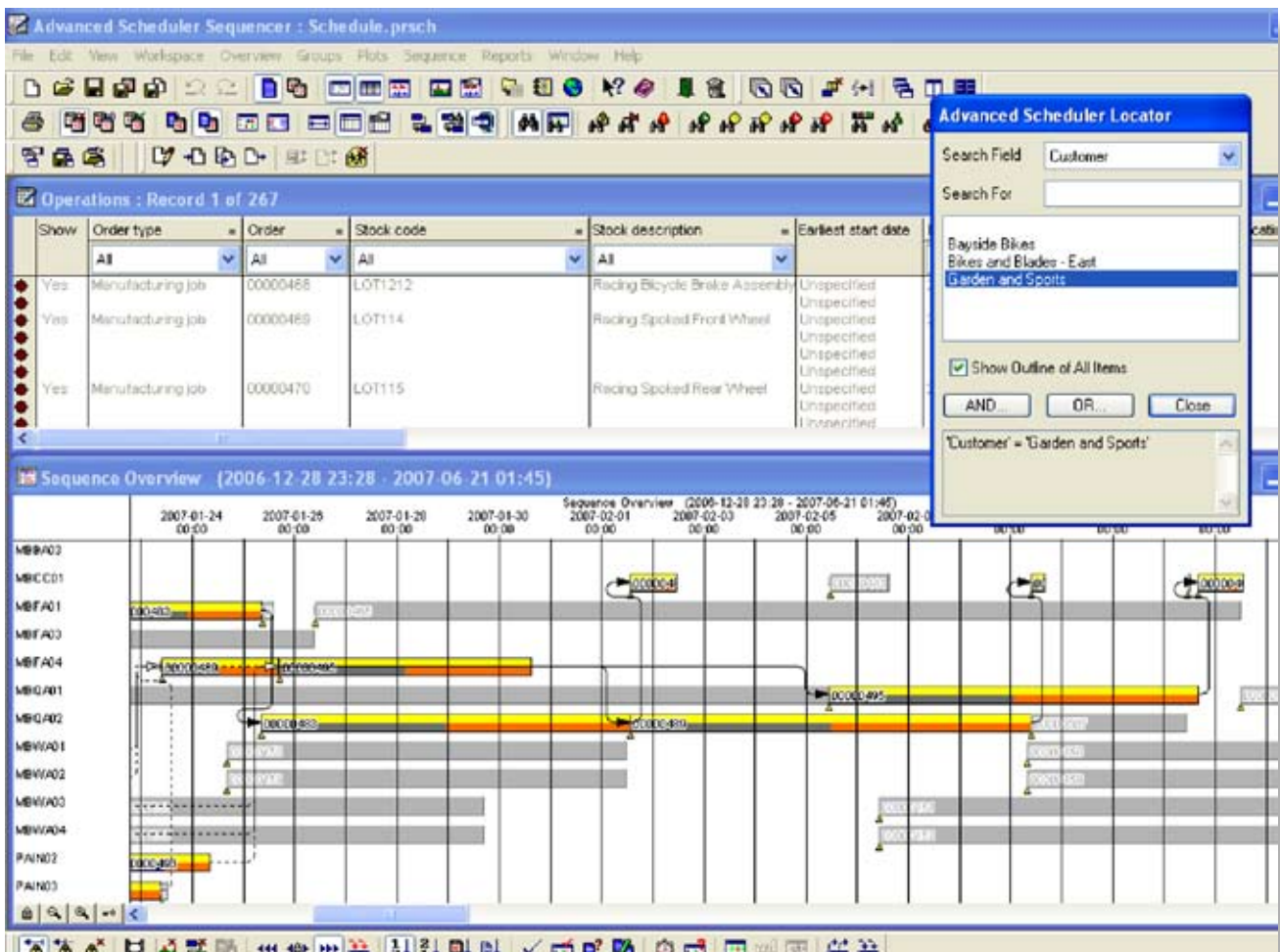
Schedule Performance Metrics				
Job Count Data				
	Early	Late	Incomplete	Started
Absolute	80	1	2	61
Percentage	55.56	0.69	1.39	42.36
Job Completion Data				
	Total	Minimum	Average	Maximum
Early Time	8632 Days 23:31	23 Hours 59 Mins	107 Days 21:54	223 Days 10:14
Late Time	9 Days 10:07	9 Days 10:07	9 Days 10:07	9 Days 10:07
Setup Time	20 Hours 12 Mins	0 Hours 00 Mins	0 Hours 15 Mins	0 Hours 42 Mins
Lead Time	823 Days 14:09	0 Hours 00 Mins	10 Days 4:02	55 Days 7:00
Added Value Percentage		1.72%	41.60%	100.00%
Resource Data				
	Minimum	Average	Maximum	
Working Percentage	0.00	3.89	15.33	
Setup Percentage	0.00	0.02	0.10	
Unavailable Percentage	0.00	70.77	73.12	
Idle Percentage	11.55	25.33	100.00	
Utilisation Percentage	0.00	14.47	57.04	
Schedule Span	2007-01-01 08:00 - 2007-06-19 09:30		169 Days 1:30	<input type="button" value="Close"/>





Keep track of customer due dates

Scheduled and current in-progress jobs can easily be identified on the Gantt chart using attributes like customer, order number, stock code etc. This gives you the ability to accurately keep customers informed on expected due dates and progress.



Optimize utilization of the factory

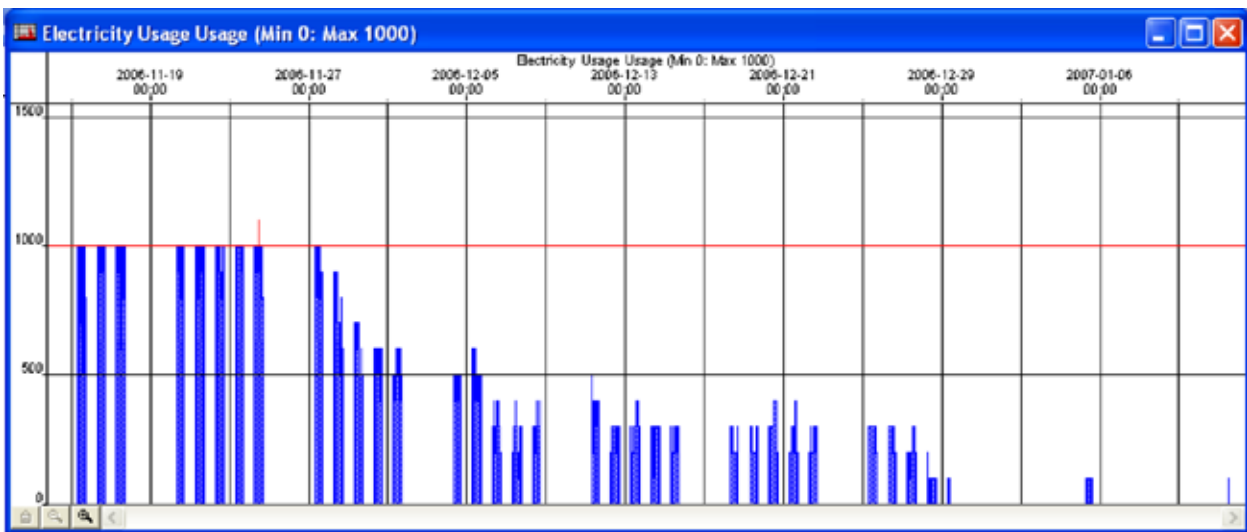
A number of automated scheduling algorithms exist in Factory Scheduling to schedule operations in a way that best suits your environment.

- These algorithms can sequence jobs in the desired sequence (by due date, by priority etc) and then schedule based on this forward from the earliest start date or backward from the due date
- Jobs can also be scheduled in a bi-directional direction around an already scheduled and fixed operation
- In the Advanced Scheduler predefined advanced scheduling rules exist which use a parallel loading method to optimize the schedule according to specific objectives (e.g. minimize setup time, minimize WIP etc)
- In the Advanced Scheduler you can compile your own unique scheduling rules using the event script utility or even Visual Basic if you wish
- Apply different scheduling rules to different products, machines, work centers etc using the locator function.



Remain agile

- You can reschedule as often as you want. This is possible because of the detailed constraints that are modeled in the Scheduler and the use of automated scheduling rules. Your schedule will therefore always reflect the current reality of your factory. Should you wish to make changes to your schedule by, as an example, re-prioritizing production, your schedule can be adjusted to reflect this in a very short time.

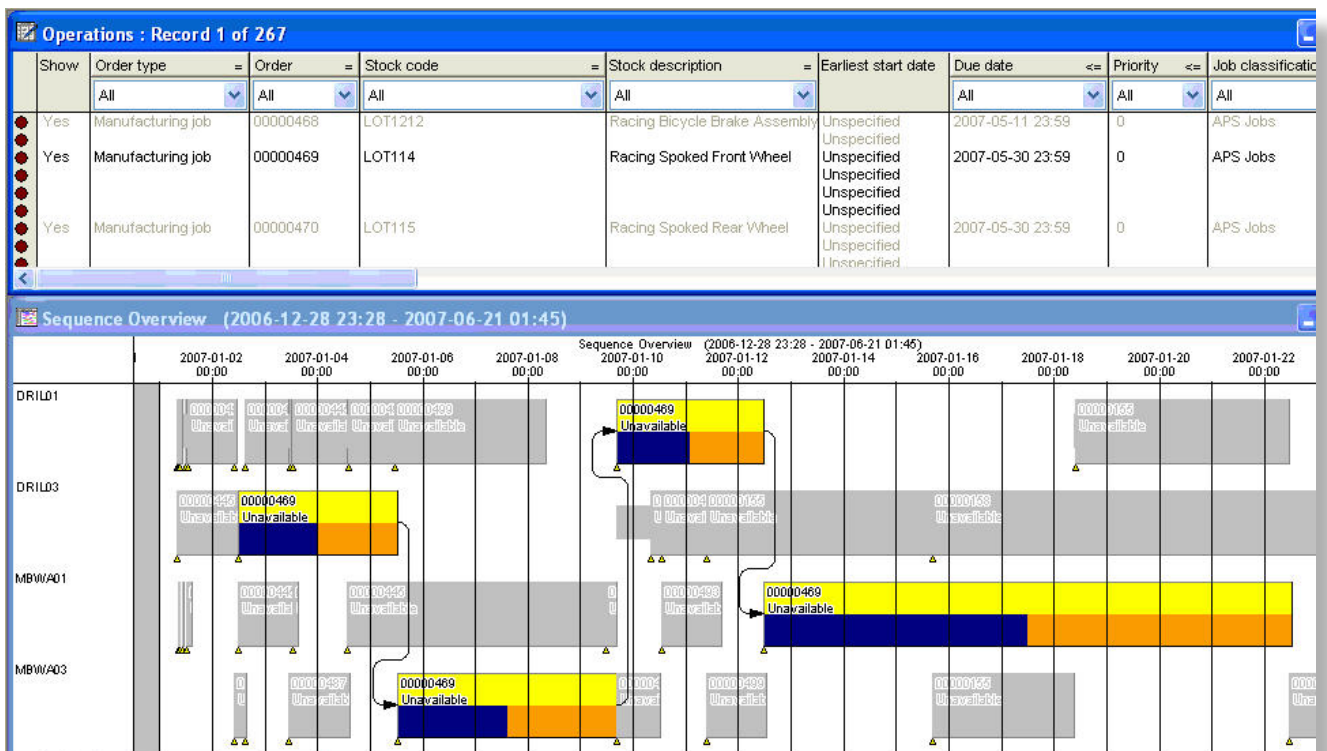


Customize the solution to your requirements

Not everybody uses scheduling the same way. The frequency with which you reschedule, the way in which you schedule, the data load, the complexity of scheduling rules employed, the business process, etc., may be very different from one implementation to another.

- The event scripting language gives you the ability to customize your implementation to suit you. You can develop customized advanced scheduling rules or automate features based on a predefined event
- Use the report writer to customize standard reports or develop your own new reports
- The import/export script writer allows you to import or export information to and from other systems
- The Communications Object allows you to communicate with other systems in real time by sending messages triggered by events.





Synchronize your production

Using Factory Scheduler you will now have one official schedule for the entire factory. In conjunction with a formalized business process, the latest official schedule will be available to all the relevant parties in your organization when required.

- Publish the latest schedule Gantt chart on your intranet in HTML format
- Update the latest scheduled dates to SYSPRO Work in Progress (WIP)
- Distribute the schedule to all other relevant systems using the Import/Export utility and the Communications Object

Once production has been completed you can measure conformance to the schedule.

Depth of experience and support

SYSPRO Factory Scheduling is based on collaboration between SYSPRO and Preactor International. You have support from the SYSPRO support team, backed up by the dedicated team of experts at Preactor. The products have the advantage of experience gained at several thousands of implementation in all manufacturing industries and on all continents.

The PrSpy diagnostic tool assists you (and SYSPRO) to analyze your system to understand technical and functional issues you may be experiencing. This tool monitors all activity in the system so that you can follow the exact sequence of events and isolate where a problem occurs. It also gives you access to the data files.



Africa and the Middle East

SYSPRO (Pty) Ltd
P O Box 77
Rivonia, 2128
South Africa
Tel: +27 (0) 11 461 1000
Fax: +27 (0) 11 807 4962
EMail: info@za.syspro.com

Asia Pacific

SYSPRO Software Pty Limited
Level 5
113 Wicks Road
North Ryde
NSW 2113
Australia
Tel: +61 1300 882 311
Fax: +61 (2) 9889 5566
EMail: info@au.syspro.com

Canada

SYSPRO Software Ltd.
4400 Dominion Street, Suite 215
Burnaby,
British Columbia
Canada
V5G 4G3
Tel: +1 (604) 451-8889
Fax: +1 (604) 451-8834
EMail: info@ca.syspro.com

UK & Europe

K3 Business Technology Group
Baltimore House
50 Kansas Avenue
Salford Quays
Manchester
M50 2GL
Tel: +44 161 876 4498
Fax: +44 161 876 4502
Email: syspro@k3btg.com

USA & Americas

SYSPRO Impact Software, Inc.
959 South Coast Drive, Suite 100
Costa Mesa
California 92626
USA
Tel: +1 (714) 437 1000
Fax: +1 (714) 437 1407
Toll free: (800) 369-8649
EMail: info@us.syspro.com

www.syspro.com

Copyright © 2007 SYSPRO. All rights reserved.

All brand and product names are trademarks or registered trademarks of their respective holders.